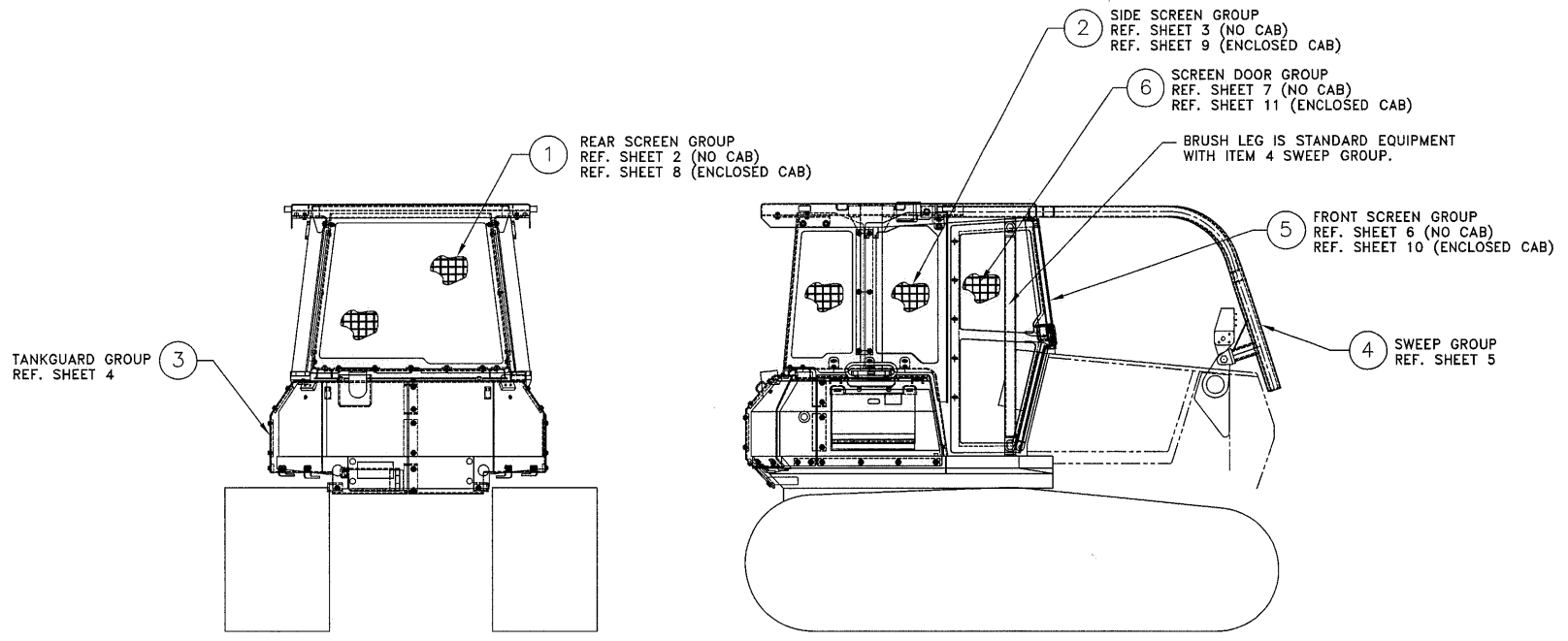


LETTER	CHANGE	BY	DATE	CKD.
A	REVISED PER DCN #13785 CL-1A	TZ	11 FEB 99	
B	REVISED PER DCN #13907 CL-1B	RWB	5 MAY 99	
C	REVISED PER DCN # 14120 CLASS 1B	RIC	5 JAN 00	
D	REVISED PER DCN # 14326 CLASS 1B	RWB	18 JAN 00	
E	REVISED PER DCN # 14421 CLASS 1B	RWB	18 JUL 00	
F	REVISED PER DCN # 14609 CLASS 3	RWB	7 NOV 01	



MACHINE WITH NO CAB SHOWN. REF SHEETS 8 THRU 11 FOR ENCLOSED CAB.

NOTES UNLESS OTHERWISE SPECIFIED

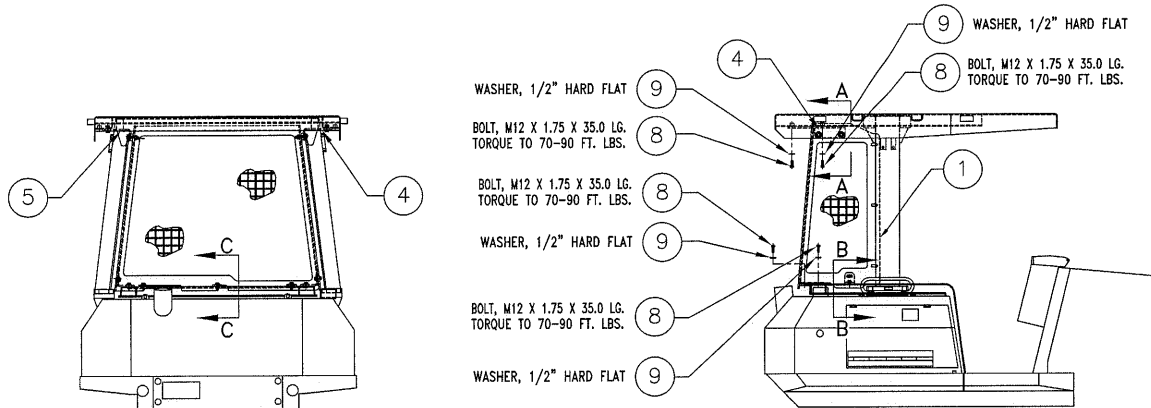
- 1- PRIOR TO FINAL WELDING OPERATE ALL MACHINE CONTROLS TO EXTREME POSITIONS AND CHECK FOR ADEQUATE CLEARANCE FROM PROTECTION PACKAGE, TIGHTEN ALL FASTENERS AND COMPLETE ALL WELDS AS SPECIFIED.
- 2- THESE PROTECTION PACKAGES ARE DESIGNED TO FIT THE KOMATSU D41E, P-6 WITH KOMATSU MANUFACTURED ROPS AND OPEN ROPS ROOF GUARD. MACHINE SERIAL NO. B20683 AND UP WITH STANDARD EQUIPMENT.
- 3- SCREEN DOORS FOR AN OPEN CAB (3K183-ITEM 6) REQUIRES FRONT SCREEN (3K183-ITEM 5) AND SIDE SCREENS (3K183-ITEM 2)
- 4- BRUSH LEGS CAN NOT BE USED WITH SCREEN DOORS (ITEM 6) AND REQUIRES SWEEPS (ITEM 4). BRUSH LEGS ARE NOT USED WITH AN ENCLOSED CAB.
- 5- REAR SCREEN (ITEM 1) AND SIDE SCREENS (ITEM 2) CAN BE INSTALLED SEPERATELY FROM TANKGUARD GROUP (ITEM 3).

ITEM	QTY.	PART NO.	DESCRIPTION	PROGRAM NO.
6	1	4D248	SCREEN DOOR GROUP	
5	1	4D247	FRONT SCREEN GROUP	
4	1	3U160	SWEEP GROUP	
3	1	7M6693	TANKGUARD GROUP	
2	1	4D246	SIDE SCREEN GROUP	
1	1	4D242	REAR SCREEN GROUP	

ITEM	QTY.	PART NO.	DESCRIPTION	PROGRAM NO.
6	1	4D235	SCREEN DOOR GROUP	
5	1	4D234	FRONT SCREEN GROUP	
4	1	3U160	SWEEP GROUP	
3	1	7M6693	TANKGUARD GROUP	
2	1	4D214	SIDE SCREEN GROUP	
1	1	4D215	REAR SCREEN GROUP	

DIMENSIONAL TOLERANCE UNLESS OTHERWISE SPECIFIED .X± .XX± ANGULAR±	R. WALCH PROJ. ENG.	MEDFORD FABRICATION PROTECTION PACKAGE KOMATSU D41E, P-6 GENERAL ARRANGEMENT
	PROGRAMMER T. ZOLL DRAFTER	
1=20 PLOT SCALE	NONE DRAWING SCALE	14 APR 98 DATE
	22106 PART NO.	SHT. 1 of 11
	F REV.	

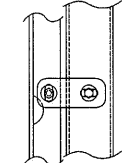
LETTER	CHANGE	BY	DATE	CKD.



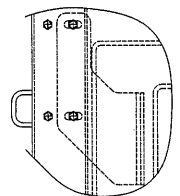
REAR VIEW

RIGHT SIDE VIEW

- 9 WASHER, 1/2" HARD FLAT
- 4
- 8 BOLT, M12 X 1.75 X 35.0 LG. TORQUE TO 70-90 FT. LBS.
- 8 BOLT, M12 X 1.75 X 35.0 LG. TORQUE TO 70-90 FT. LBS.
- 8 BOLT, M12 X 1.75 X 35.0 LG. TORQUE TO 70-90 FT. LBS.
- 9 WASHER, 1/2" HARD FLAT
- 8 BOLT, M12 X 1.75 X 35.0 LG. TORQUE TO 70-90 FT. LBS.
- 9 WASHER, 1/2" HARD FLAT

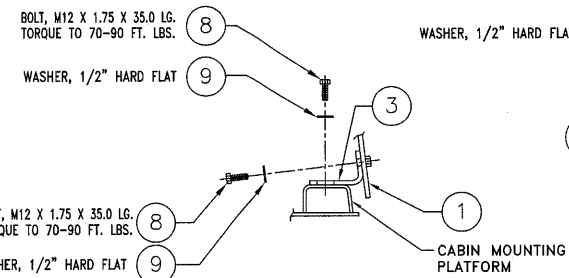


TOP VIEW



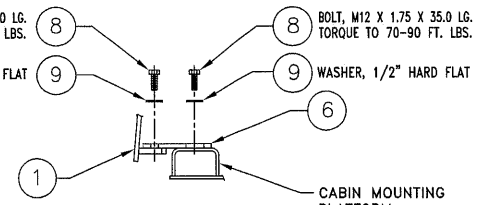
SECTION A-A

- 4
- 1
- 9 WASHER, 1/2" HARD FLAT
- 8 BOLT, M12 X 1.75 X 35.0 LG. TORQUE TO 70-90 FT. LBS.
- 10 BOLT, M16 X 2.0 X 60.0 LG. TORQUE TO 150-200 FT. LBS.
- 11 NUT, M16 X 2.0
- 12 WASHER, 5/8" HARD FLAT
- 7 SHOCK MOUNT
- EXISTING OPEN ROPS FOPS



SECTION B-B

- 8 BOLT, M12 X 1.75 X 35.0 LG. TORQUE TO 70-90 FT. LBS.
- 9 WASHER, 1/2" HARD FLAT
- 3
- 1
- 1
- 8 BOLT, M12 X 1.75 X 35.0 LG. TORQUE TO 70-90 FT. LBS.
- 9 WASHER, 1/2" HARD FLAT
- 1
- 1



SECTION C-C

- 8 BOLT, M12 X 1.75 X 35.0 LG. TORQUE TO 70-90 FT. LBS.
- 9 WASHER, 1/2" HARD FLAT
- 6
- 1
- 8 BOLT, M12 X 1.75 X 35.0 LG. TORQUE TO 70-90 FT. LBS.
- 9 WASHER, 1/2" HARD FLAT
- 1
- 1

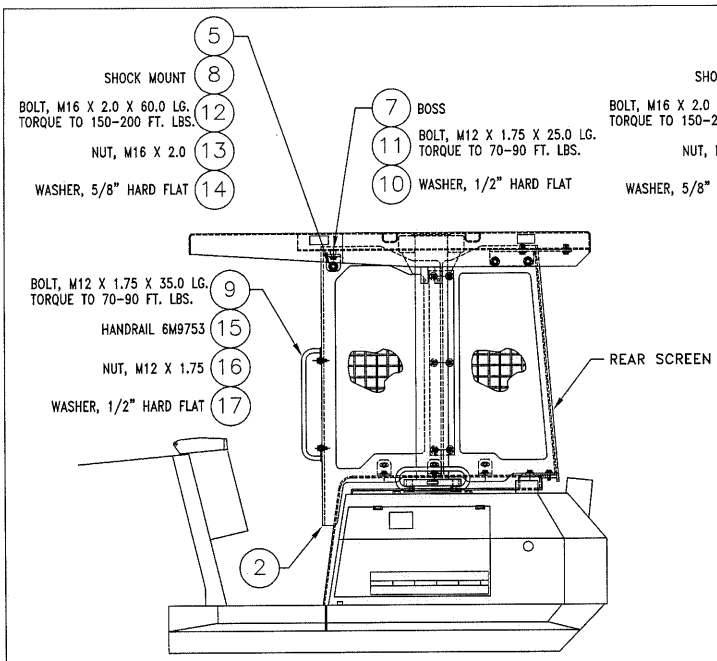
NOTES UNLESS OTHERWISE SPECIFIED

- 1- LOOSELY BOLT SCREEN MOUNTING TABS ITEM 4 AND 5, TO REAR SCREEN ASSEMBLY ITEM 1, USING HARDWARE SUPPLIED ITEMS 7, 10, 11, AND 12 AS SHOWN. REFERENCE SECTION A-A. LOOSELY BOLT SCREEN MOUNTING TABS ITEM 3 AND 6, TO REAR SCREEN ASSEMBLY ITEM 1, USING HARDWARE SUPPLIED ITEMS 8 AND 9, AS SHOWN. REFERENCE SECTION B-B AND SECTION C-C.
 - 2- LOOSELY FASTEN ASSEMBLY TO CABIN PLATFORM AND OPEN ROPS FOPS USING HARDWARE SUPPLIED ITEMS 8 AND 9, AS SHOWN. REFERENCE SECTIONS A-A, B-B AND C-C.
 - 3- OPERATE ALL MACHINE CONTROLS TO EXTREME POSITIONS AND CHECK FOR ADEQUATE CLEARANCES FROM REAR SCREEN, TORQUE ALL BOLTS AS SPECIFIED.
- REFERENCE PART NUMBER 4D215 FOR COMPLETE REAR SCREEN GROUP.
- DIMENSIONS IN () ARE U.S. EQUIVALENT.

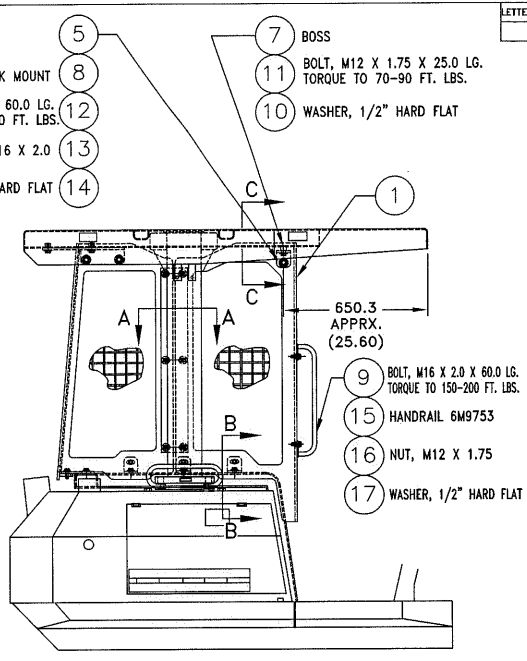
* 7M6737 HARDWARE GROUP CONSISTS OF ITEMS 3-12

ITEM	QTY.	PART NO.	DESCRIPTION	PROGRAM NO.
12	8	25N10C	WASHER, 5/8" HARD FLAT	
11	4	55N16C	NUT, M16 X 2.0	
10	4	34N1660C	BOLT, M16 X 2.0 X 60.0 LG.	
9	14	25N8C	WASHER, 1/2" HARD FLAT	
8	14	34N1235C	BOLT, M12 X 1.75 X 35.0 LG.	
7	4	9M206	SHOCK MOUNT	
6	3	7M6729	SCREEN MOUNTING TAB	
5	1	7M6724	SCREEN MOUNTING TAB	
4	1	7M6723	SCREEN MOUNTING TAB	
3	2	7M6721	SCREEN MOUNTING TAB	
2	1	7M6737	HARDWARE GROUP	
1	1	7M6736	REAR SCREEN WELDMENT	

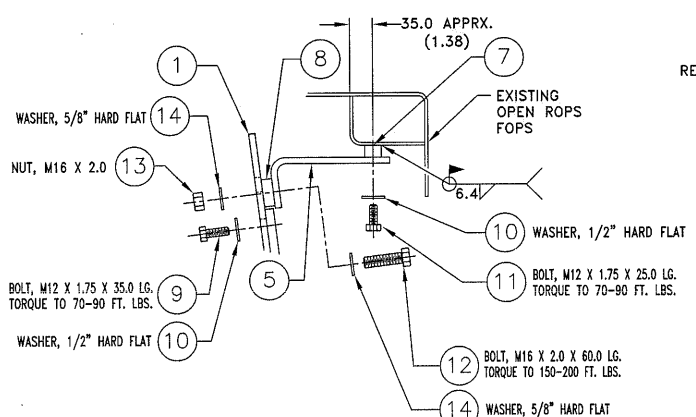
DIMENSIONAL TOLERANCE UNLESS OTHERWISE SPECIFIED .XX .XX± ANGULAR±	R. WALCH PROJ. ENG.	MEDFORD FABRICATION
	PROGRAMMER	
DIMENSIONS ARE METRIC	T. ZOLL DRAFTER	PROTECTION PACKAGE KOMATSU D41E, P-6 REAR SCREEN GROUP
1=20 PLOT SCALE	NONE DRAWING SCALE	24 MAR 98 DATE
		22106 PART NO.
		SHT. 2 of 11
		F REV.



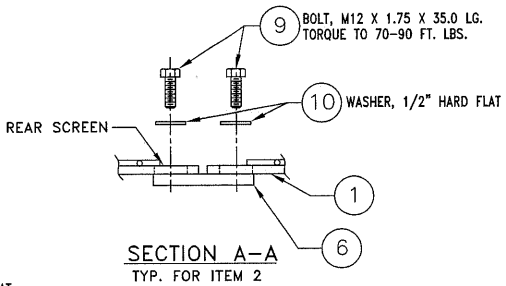
LEFT SIDE VIEW



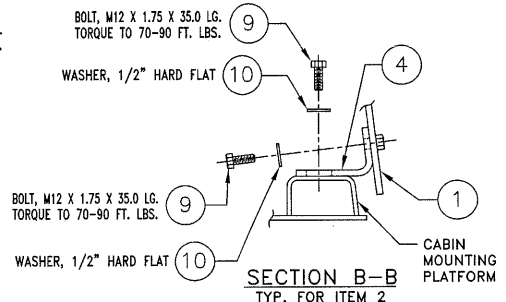
RIGHT SIDE VIEW



SECTION C-C
TYP. FOR ITEM 2



SECTION A-A
TYP. FOR ITEM 2



SECTION B-B
TYP. FOR ITEM 2

LETTER	CHANGE	BY	DATE	CKD.

NOTES UNLESS OTHERWISE SPECIFIED

- 1-INSTALL SCREEN MOUNTING TABS ITEM 5 ONTO SIDE SCREEN WELDMENTS ITEMS 1 AND 2, USING HARDWARE SUPPLIED ITEMS 13, 14 AND SHOCK MOUNT ITEM 8. INSTALL BOSS ITEM 7 ONTO SCREEN MOUNTING TABS ITEM 5, USING HARDWARE SUPPLIED ITEMS 10 AND 11, AS SHOWN. REFERENCE SECTION C-C. INSTALL SCREEN MOUNTING TABS ITEM 4 ONTO SIDE SCREEN WELDMENTS ITEMS 1 AND 2 USING HARDWARE SUPPLIED, ITEMS 9 AND 10, AS SHOWN. REFERENCE SECTION B-B. INSTALL SCREEN MOUNTING BAR ITEM 6 ONTO SIDE SCREEN WELDMENTS ITEMS 1 AND 2, USING HARDWARE SUPPLIED ITEMS 9 AND 10, AS SHOWN. REFERENCE SECTION A-A.
- 2- ATTACH SIDE SCREEN ASSEMBLIES ITEMS 1 AND 2 TO REAR SCREEN ASSEMBLY WITH SCREEN MOUNTING BAR ITEM 6, USING HARDWARE SUPPLIED ITEMS 9 AND 10 AS SHOWN. REFERENCE SECTION A-A. ATTACH SIDE SCREEN ASSEMBLIES ITEM 1 AND 2 TO EROPS MOUNTING PLATFORM USING HARDWARE SUPPLIED, ITEMS 9 AND 10, AS SHOWN. REFERENCE SECTION B-B.
- 3-TACK WELD BOSS ITEM 7 TO OROPS ROOF AS SHOWN REFERENCE SECTION C-C.
- 4-ATTACH HANDRAIL ITEM 15 TO SIDE SCREENS, ITEMS 1 AND 2, USING HARDWARE SUPPLIED, ITEMS 9, 16, AND 17. HANDRAIL IS NOT USED WHEN SCREEN DOORS ARE INSTALLED.
- 5-PRIOR TO FINAL WELDING, OPERATE ALL MACHINE CONTROLS TO EXTREME POSITIONS AND CHECK FOR ADEQUATE CLEARANCES FROM PROTECTION PACKAGE. TIGHTEN ALL FASTENERS AND COMPLETE ALL WELDS AS SPECIFIED.

REFERENCE PART NUMBER 4D214 FOR COMPLETE SIDE SCREEN GROUP.

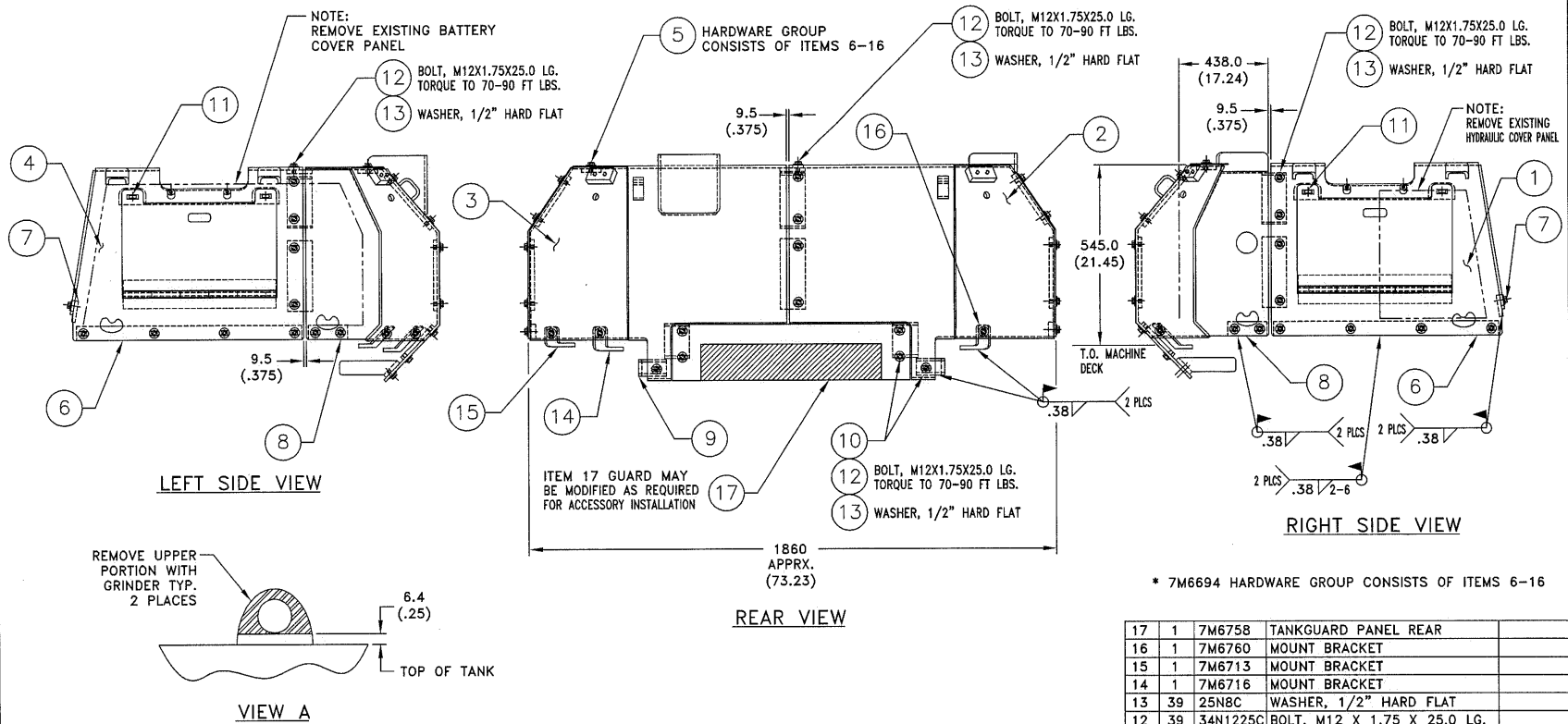
DIMENSIONS IN () ARE U.S. EQUIVALENT.

* 7M6735 HARDWARE GROUP CONSISTS OF ITEMS 4-17

ITEM	QTY.	PART NO.	DESCRIPTION	PROGRAM NO.
17	8	20N8C	WASHER, 1/2" HARD FLAT	
16	4	55N12C	NUT, M12 X 1.75	
15	2	6M9753	HANDRAIL	
14	4	25N10C	WASHER, 5/8" HARD FLAT	
13	2	55N16C	NUT, M16 X 2.0	
12	2	34N1660C	BOLT, M16 X 2.0 X 60.0 LG.	
11	2	34N1225C	BOLT, M12 X 1.75 X 25.0 LG.	
10	22	25N8C	WASHER, 1/2" HARD FLAT	
9	24	34N1235C	BOLT, M12 X 1.75 X 35.0 LG.	
8	2	9M206	SHOCK MOUNT	
7	2	6M6202	BOSS	
6	2	7M6728	SCREEN MOUNTING BAR	
5	2	7M6725	SCREEN MOUNTING TAB	
4	4	7M6721	SCREEN MOUNTING TAB	
3	1	7M6735	HARDWARE GROUP, SIDE SCREENS	
2	1	7M6734	SIDE SCREEN WELDMENT, LEFT SIDE	
1	1	7M6733	SIDE SCREEN WELDMENT, RIGHT SIDE	

DIMENSIONAL TOLERANCE UNLESS OTHERWISE SPECIFIED		R. WALCH PROJ. ENG.	MEDFORD FABRICATION	
±.04	ANGULAR±			
DIMENSIONS ARE METRIC		PROGRAMMER	PROTECTION PACKAGE KOMATSU D41E, P-6 SIDE SCREEN GROUP	
1=14	NONE	T. ZOLL DRAFTER		
PLOT SCALE	DRAWING SCALE	25 MAR 98	2Z106	F
		DATE	PART NO.	REV.

LETTER	CHANGE	BY	DATE	CKD.



* 7M6694 HARDWARE GROUP CONSISTS OF ITEMS 6-16

ITEM	QTY.	PART NO.	DESCRIPTION	PROGRAM NO.
17	1	7M6758	TANKGUARD PANEL REAR	
16	1	7M6760	MOUNT BRACKET	
15	1	7M6713	MOUNT BRACKET	
14	1	7M6716	MOUNT BRACKET	
13	39	25N8C	WASHER, 1/2" HARD FLAT	
12	39	34N1225C	BOLT, M12 X 1.75 X 25.0 LG.	
11	4	9M247	PIN	
10	1	7M6714	MOUNT BRACKET	
9	1	7M6715	MOUNT BRACKET	
8	2	7M6720	MOUNT PAD	
7	2	7M6712	MOUNT BRACKET	
6	2	7M6711	MOUNT PAD	
*	5	7M6694	HARDWARE GROUP	
4	1	7M6695	TANKGUARD ASSEMBLY LEFT SIDE	
3	1	7M6696	TANKGUARD ASSEMBLY LEFT SIDE REAR	
2	1	7M6697	TANKGUARD ASSEMBLY RIGHT SIDE REAR	
1	1	7M6698	TANKGUARD ASSEMBLY RIGHT SIDE	

- NOTES UNLESS OTHERWISE SPECIFIED
- 1- REMOVE EXISTING LEFT BATTERY AND RIGHT HYDRAULIC FILL COVER PANELS. REMOVE EXISTING HANDRAILS AND LIGHT BRACKETS, REMOUNT IN APPROPRIATE LOCATIONS ON TANK GUARD USING EXISTING HARDWARE. REMOVE LUGS FROM FUEL TANK REF. VIEW A.
 - 2- LOOSELY INSTALL MOUNT BRACKETS, ITEMS 9, 10, 14, 15 AND 16 TO REAR TANK GUARD ITEMS 2 AND 3 USING HARDWARE SUPPLIED ITEMS 12 AND 13. LOCATE REAR TANK GUARDS ON MACHINE AND TACKWELD MOUNT BRACKETS TO BOTTOM OF MACHINE. COVER PLATE, ITEM 17 MAYBE MODIFIED TO FIT DIFFERENT MACHINE CONFIGURATIONS.
 - 3- INSTALL MOUNT PADS, ITEMS 6 AND 8 AND MOUNT BRACKET ITEM 7 TO RIGHT SIDE TANK GUARD ITEM 1 USING HARDWARE SUPPLIED ITEM 16. LOCATE RIGHT SIDE TANK GUARD ON MACHINE AND FASTEN TO REAR TANK GUARDS USING HARDWARE SUPPLIED ITEM 16. TACKWELD MOUNTING BRACKETS TO MACHINE AS SHOWN.
 - 4- INSTALL MOUNT PADS, ITEMS 6 AND 8 AND MOUNT BRACKET ITEM 7 TO LEFT SIDE TANK GUARD ITEM 4 USING HARDWARE SUPPLIED ITEMS 14 AND 15. LOCATE LEFT SIDE TANK GUARD ON MACHINE AND FASTEN TO REAR TANK GUARDS USING HARDWARE SUPPLIED ITEMS 14 AND 15. TACKWELD MOUNTING BRACKETS, ITEMS 6, 7 AND 8 TO MACHINE AS SHOWN.
 - 5- PRIOR TO FINAL WELDING, THE REAR, SIDE AND FRONT SCREENS SHOULD BE INSTALLED TO INSURE CORRECT INTERFACE WITH TANK GUARD GROUP. AFTER INSTALLATION OF THESE ITEMS, COMPLETE ALL WELDS AND TIGHTEN ALL BOLTS AS SPECIFIED.
- REFERENCE PART NUMBER 7M6693 FOR COMPLETE TANK GUARD GROUP.
- DIMENSIONS IN () ARE U.S. EQUIVALENT.

DIMENSIONAL TOLERANCE UNLESS OTHERWISE SPECIFIED XX± ANGULAR±	R. WALCH PROJ. ENG.	MEDFORD FABRICATION PROTECTION PACKAGE KOMATSU D41E, P-6 TANKGUARD GROUP			
	PROGRAMMER T. ZOLL DRAFTER				
DIMENSIONS ARE METRIC	1=10 PLOT SCALE	NONE DRAWING SCALE	1 APR 98 DATE	22106 PART NO.	F REV.

LETTER	CHANGE	BY	DATE	CKD.

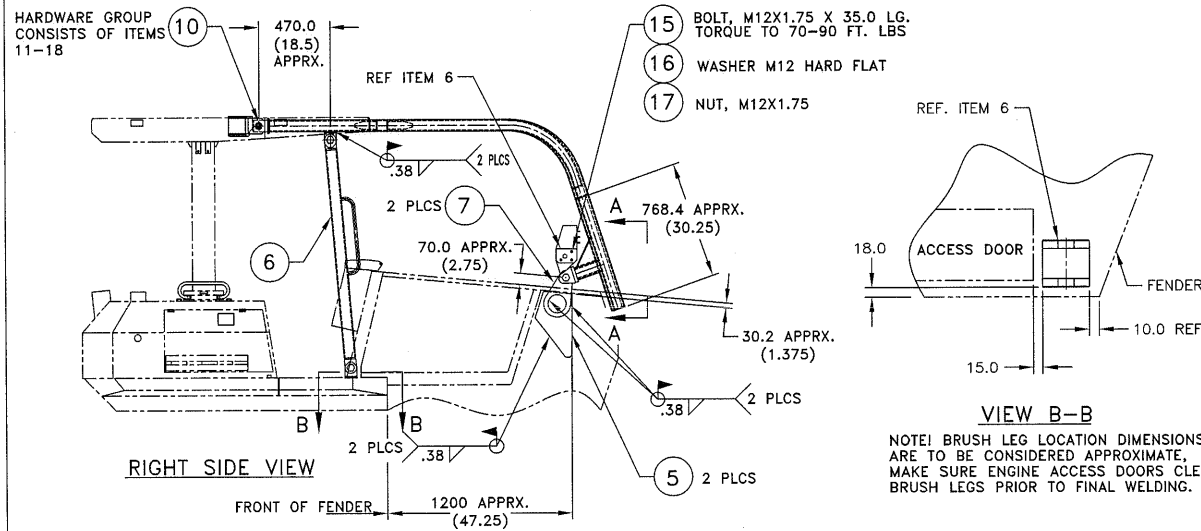
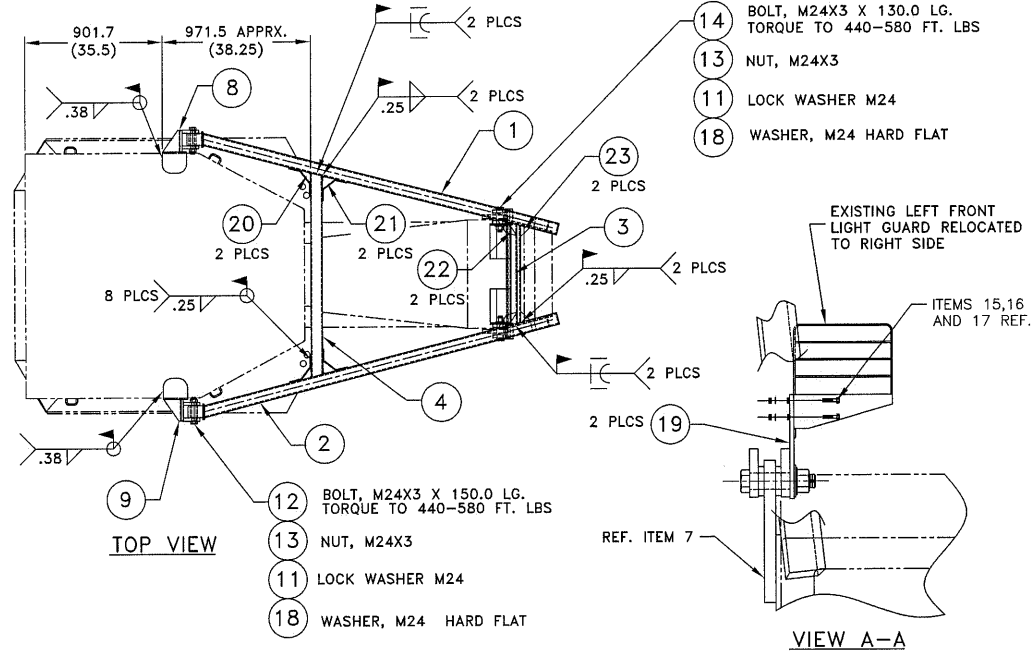
INSTALLATION INSTRUCTIONS

- 1-REMOVE EXISTING LIGHTS AND MOUNTING BRACKETS.
 - 2-POSITION RIGHT SIDE BRACKET ITEM 9 AND LEFT SIDE BRACKET ITEM 8 AS SHOWN AND TACKWELD, IN POSITION
 - 3-POSITION MOUNTING PLATES, ITEM 5, ON EACH SIDE OF MACHINE APPROXIMATELY AS SHOWN AND TACKWELD, IN POSITION.
 - 4-INSTALL PIVOT MOUNTS, ITEM 7, ONTO SWEEP ARMS, ITEMS 1 AND 2, USING HARDWARE SUPPLIED ITEMS 11, 14, 17 AND 18.
 - 5-INSTALL SWEEP ARMS, ITEMS 1 AND 2, ONTO BRACKETS ITEMS 8 AND 9, POSITION PIVOT MOUNT, ITEM 7, APPROXIMATELY AS SHOWN AND TACKWELD ITEM 7 TO MOUNTING PLATE, ITEM 5.
 - 6-LOCATE SWEEPS REAR CROSSMEMBER AS SHOWN AND TACKWELD.
 - 7-LOCATE SWEEPS FRONT CROSSMEMBER AS SHOWN AND TACKWELD.
 - 8-INSTALL FRONT LIGHT BRACKET, ITEM 19, AS SHOWN REFERENCE VIEW A-A. REINSTALL FRONT LIGHTS USING HARDWARE SUPPLIED ITEMS 15, 16 AND 17 AND REWIRE LIGHTS.
 - 9-LOCATE BRUSH LEGS AS SHOWN REFERENCE VIEW B-B, BOTTOM END FIRST, AND TACKWELD.
 - 10-LOCATE SWEEP GUSSETS (ITEMS 20 THRU 23) AS SHOWN AND TACKWELD INTO PLACE.
 - 11 -CHECK FOR ADEQUATE CLEARANCES AND CORRECT ALIGNMENTS. TIGHTEN ALL BOLTS AND COMPLETE ALL WELDS AS SPECIFIED.
- REFERENCE PART NUMBER 3U160 & 3U167 FOR COMPLETE SWEEPS GROUP.
DIMENSIONS SHOWN IN () ARE U.S. EQUIVALENT.

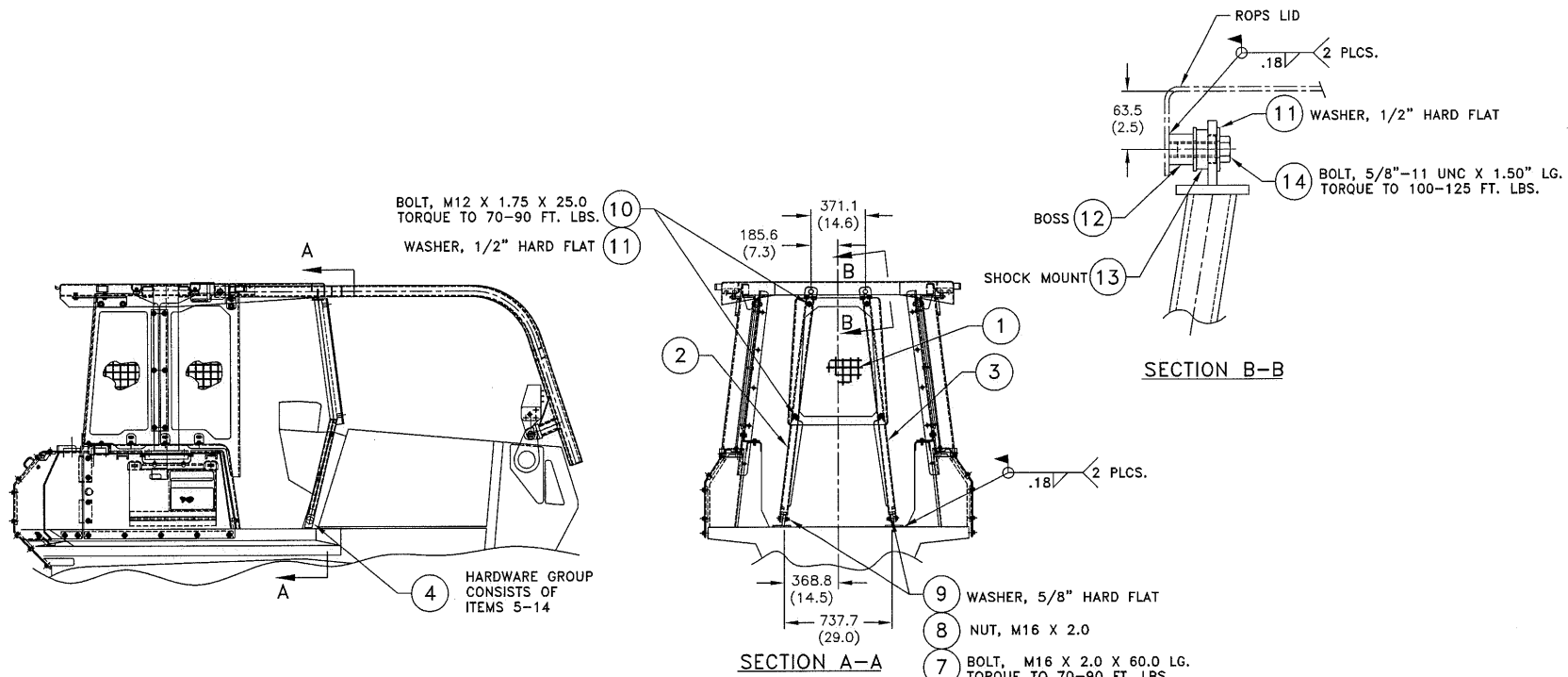
* 7M6627 HARDWARE GROUP CONSISTS OF ITEMS 11-18.

23	2	7M7501	GUSSET
22	2	7M7500	GUSSET
21	2	7M7499	GUSSET
20	2	7M7498	GUSSET
19	2	7M6692	BRACKET, FRONT LIGHT
18	4	36N24C	WASHER, M24
17	6	55N12C	NUT, M12X1.75
16	6	36N12C	WASHER M12
15	6	34N1235C	BOLT, M12X1.75 X 35.0 LG.
14	2	35N2430C	BOLT, M24X3 X 130.0 LG.
13	4	55N24C	NUT, M24X3
12	2	35N2450C	BOLT, M24X3 X 150.0 LG.
11	4	42N24C	LOCK WASHER M24
* 10	1	7M6627	HARDWARE GROUP
9	1	7M6564	BRACKET, RIGHT SIDE
8	1	7M6567	BRACKET, LEFT SIDE
7	2	7M6128	PIVOT MOUNT
6	1	7M6893	BRUSH LEG GROUP
5	2	7M6328	MOUNTING PLATE
4	1	7M6150	REAR CROSSMEMBER
3	1	7M6137	FRONT CROSSMEMBER
2	1	7M6569	SWEEP ARM, RIGHT SIDE
1	1	7M6570	SWEEP ARM, LEFT SIDE

ITEM	QTY.	PART NO.	DESCRIPTION	PROGRAM NO.
DIMENSIONAL TOLERANCE UNLESS OTHERWISE SPECIFIED				
.X±			R.WALCH	MEDFORD
.XX±			PROJ. ENG.	
ANGULAR±			PROGRAMMER	FABRICATION
DIMENSIONS ARE METRIC			K.NUSSBAUM	PROTECTION PACKAGE
1=20			DRAFTER	KOMATSU D41E, P-6
PLOT SCALE			DATE	SWEEP GROUP
DRAWING SCALE			13APR98	22106
				22106
				SHT. 5 OF 11
				F REV.



LETTER	CHANGE	BY	DATE	CHKD.



BOLT, M12 X 1.75 X 25.0
TORQUE TO 70-90 FT. LBS.
WASHER, 1/2" HARD FLAT

HARDWARE GROUP
CONSISTS OF
ITEMS 5-14

ROPS LID
.18L 2 PLCS.
63.5 (2.5)
11 WASHER, 1/2" HARD FLAT
14 BOLT, 5/8"-11 UNC X 1.50" LG.
TORQUE TO 100-125 FT. LBS.

SECTION B-B

SECTION A-A

- 9 WASHER, 5/8" HARD FLAT
- 8 NUT, M16 X 2.0
- 7 BOLT, M16 X 2.0 X 60.0 LG.
TORQUE TO 70-90 FT. LBS.
- 6 MOUNTING PAD
- 5 MOUNTING BRACKET

NOTES UNLESS OTHERWISE SPECIFIED

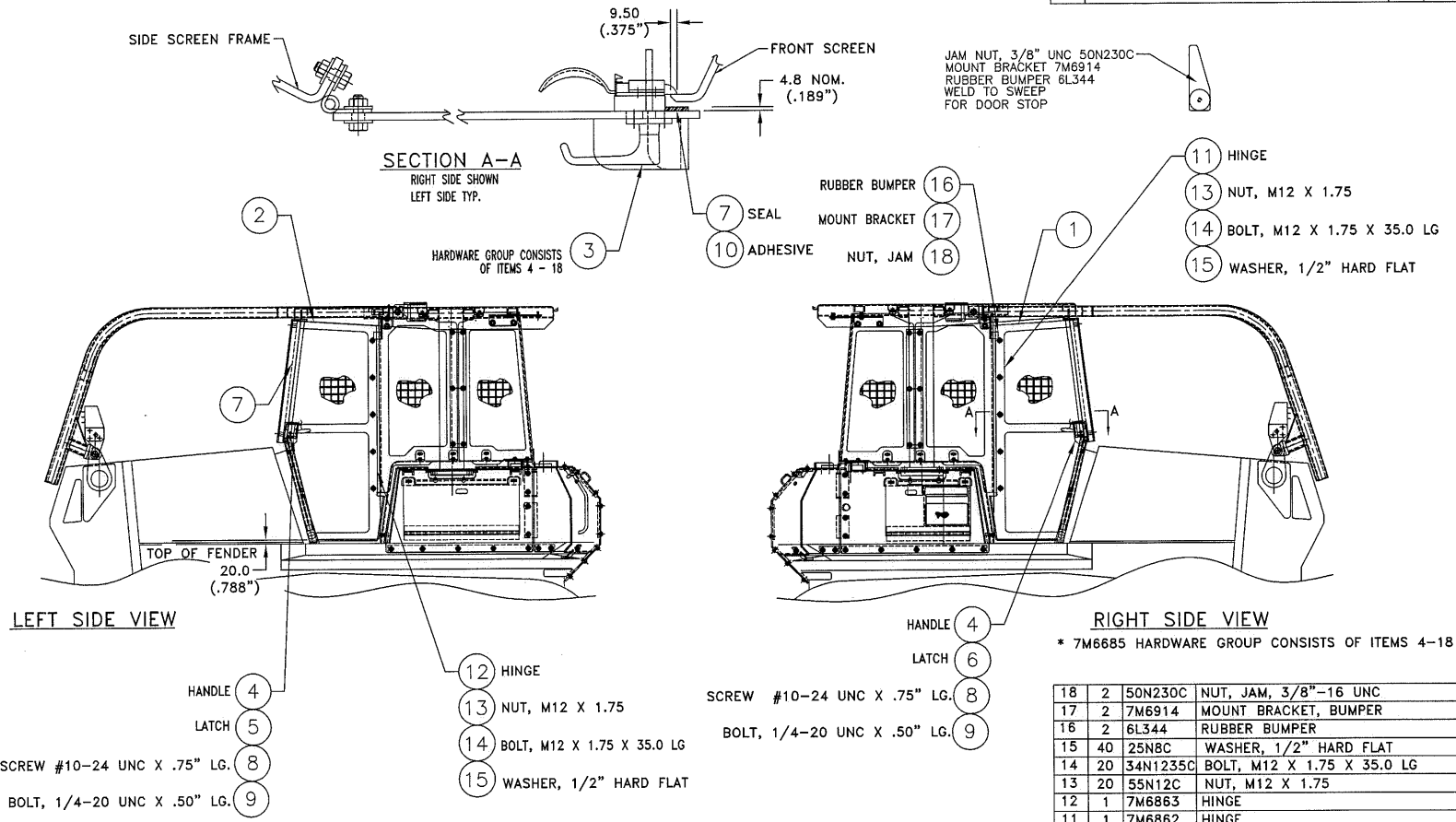
- 1- INSTALL MOUNTING BRACKETS ITEM 5 ONTO LEG ASSEMBLIES ITEMS 2 AND 3 USING HARDWARE ITEMS 7, 8 AND 9 REFERENCE SECTION A-A.
- 2- TACKWELD BOSS ITEM 12 ONTO INSIDE FRONT LIP OF ROPS LID REFERENCE SECTIONS A-A AND B-B.
- 3- ATTACH TOP END OF RIGHT SIDE LEG ITEM 2 TO BUSHING ITEM 12 USING HARDWARE ITEMS 11, 13 AND 14. REPEAT WITH LEFT SIDE LEG ASSEMBLY ITEM 3.
- 4- POSITION FRONT SCREEN ITEM 1 ON LEG ASSEMBLIES ITEMS 2 AND 3 USING HARDWARE ITEMS 10 AND 11 REFERENCE SECTION A-A.
- 5- LOCATE MOUNTING PADS ITEM 6 AND MOUNTING BRACKETS ITEM 5 AND TACKWELD IN POSITION.
NOTE: IF FRONT SCREEN IS TO BE USED WITH SCREEN DOOR GROUP 4D239 INSTALL DOORS AND CHECK FITS AND CLEARANCES BEFORE FINAL WELDING.
- 6- TIGHTEN ALL FASTENERS AND COMPLETE ALL WELDS AS SPECIFIED.

REFERENCE PART NUMBER 4D234 FOR COMPLETE FRONT SCREEN GROUP
DIMENSIONS IN () ARE U.S. EQUIVALENT

ITEM	QTY.	PART NO.	DESCRIPTION	PROGRAM NO.
14	2	8N1014C	BOLT, 5/8"-11 UNC X 1.75"	
13	2	9M206	SHOCK MOUNT	
12	2	9M513	BOSS, 32.0X25.4 LONG, 5/8"-11 UNC	
11	4	25N8C	WASHER, 1/2" HARD FLAT	
10	4	34N1235C	BOLT, M12 X 1.75 X 35.0 LG.	
9	8	25N10C	WASHER, 5/8" HARD FLAT	
8	2	55N16C	NUT, M16 X 2.0	
7	2	34N1660C	BOLT, M16 X 2.0 X 60.0 LG.	
6	2	7M6855	MOUNTING PAD	
5	2	7M6854	MOUNTING BRACKET	
* 7M6842 HARDWARE GROUP CONSISTS OF ITEMS 5-14				
4	1	7M6842	FRONT SCREEN HARDWARE GROUP	
3	1	7M6848	LEG ASSEMBLY, LHS	
2	1	7M6847	LEG ASSEMBLY, RHS	
1	1	7M6845	FRONT SCREEN PANEL	
DIMENSIONAL TOLERANCE UNLESS OTHERWISE SPECIFIED		R.WALCH PROJ. ENG.	MEDFORD FABRICATION	
.XX± ANGULAR±		K.NUSSBAUM DRAFTER		
DIMENSIONS ARE METRIC		PROGRAMMER	PROTECTION PACKAGE KOMATSU D41E,P-6 FRONT SCREEN GROUP	
1=20 PLOT SCALE	NONE DRAWING SCALE	5 AUG 99 DATE	22106 PART NO.	F REV.

MEDFORD
FABRICATION
PROTECTION PACKAGE
KOMATSU D41E,P-6
FRONT SCREEN GROUP

LETTER	CHANGE	BY	DATE	CKD.



- NOTES UNLESS OTHERWISE SPECIFIED**
- 1- INSTALL LATCHES, ITEMS 5 AND 6 ONTO DOOR ASSEMBLIES ITEMS 1 AND 2 USING HARDWARE SUPPLIED ITEMS 8 AND 9.
 - 2- POSITION RIGHT SIDE DOOR ASSEMBLY ITEM 1 ON MACHINE AS SHOWN, REFERENCE RIGHT SIDE VIEW AND SECTION A-A. BOLT HINGE ITEM 11 TO SIDE SCREEN USING HARDWARE ITEMS 13, 14 AND 15. REPEAT WITH LEFT SIDE DOOR ASSEMBLY ITEM 2 AND HINGE ITEM 12 REFERENCE LEFT SIDE VIEW AND SECTION A-A.
 - 3- ATTACH SEAL ITEM 7 TO DOORS, USING ADHESIVE ITEM 10, AT CONTACT POINTS BETWEEN DOORS ITEMS 1 AND 2 AND FRONT SCREEN.
 - 4- LOCATE BRACKET ITEM 17 AND RUBBER BUMPER AND JAM NUT ITEMS 16 AND 18 ON SWEEPS AS REQUIRED FOR DOOR STOP. TACKWELD TO SWEEP ARMS.
 - 5- OPERATE DOORS, CHECK FOR CORRECT ALIGNMENT AND OPERATION. TIGHTEN ALL BOLTS AND COMPLETE ALL WELDS AS SPECIFIED.

NOTE: 4D235 SCREEN DOOR GROUP REQUIRES 4D234 FRONT SCREEN GROUP AND 4D214 SIDE SCREEN GROUP.
 4D235 SCREEN DOOR GROUP CANNOT BE INSTALLED WITH 7M6893 BRUSH LEG GROUP.
 REFERENCE PART NUMBER 4D235 FOR COMPLETE SCREEN DOOR GROUP
 DIMENSIONS IN () ARE U.S. EQUIVALENT.

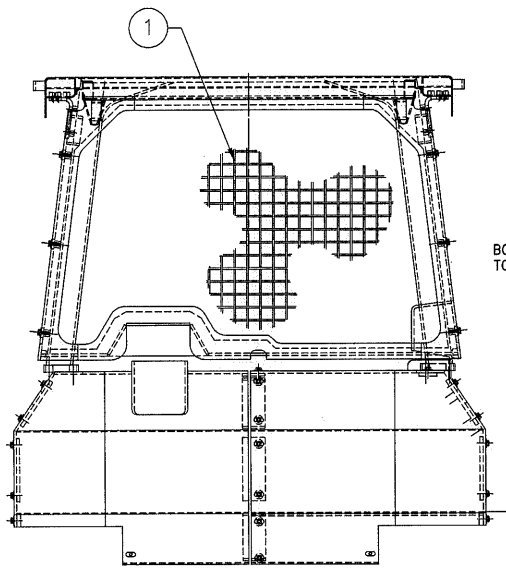
* 7M6685 HARDWARE GROUP CONSISTS OF ITEMS 4-18

ITEM	QTY.	PART NO.	DESCRIPTION	PROGRAM NO.
18	2	50N230C	NUT, JAM, 3/8"-16 UNC	
17	2	7M6914	MOUNT BRACKET, BUMPER	
16	2	6L344	RUBBER BUMPER	
15	40	25N8C	WASHER, 1/2" HARD FLAT	
14	20	34N1235C	BOLT, M12 X 1.75 X 35.0 LG	
13	20	55N12C	NUT, M12 X 1.75	
12	1	7M6863	HINGE	
11	1	7M6862	HINGE	
10	1	8C95	ADHESIVE, CARBOLINE, 3 OZ	
9	8	14N404C	SHCS, 1/4"-20 UNC X 0.50"	
8	4	32N306C	OVHMS, #10-24 X 0.75"	
7	2	4C426	SEAL 4.8 X 19.1 X 1000.0	
6	1	9M40	LATCH, RIGHT SIDE	
5	1	9M39	LATCH, LEFT SIDE	
4	2	9M492	HANDLE	
3	1	7M6843	HARDWARE GROUP, DOOR	
2	1	7M6674	DOOR ASSEMBLY, LEFT SIDE	
1	1	7M6673	DOOR ASSEMBLY, RIGHT SIDE	

DIMENSIONS ARE METRIC	PROGRAMMER	DESCRIPTION
1=20 PLOT SCALE	R. WALCH PROJ. ENG.	MEDFORD FABRICATION PROTECTION PACKAGE KOMATSU D41E,P-6 SCREEN DOOR GROUP
DRAWING SCALE	K. NUSSBAUM DRAFTER	
1=20	30 JUL 99	2Z106
PLOT SCALE	DATE	PART NO.

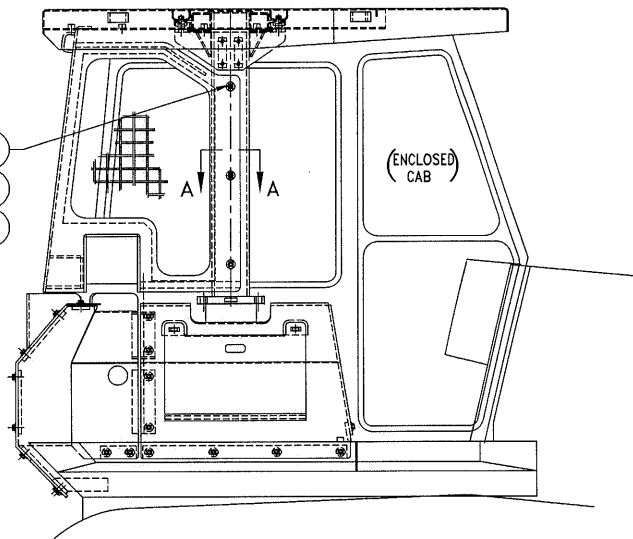
F. REV. SHT. 7 of 11

LETTER	CHANGE	BY	DATE	CKD.

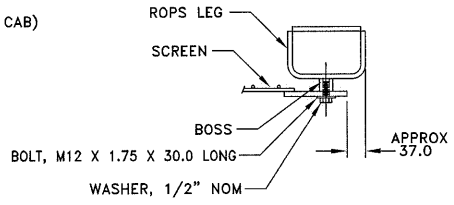


REAR VIEW
(D41E,P-6 WITH ENCLOSED CAB)

- MOUNT BLOCK (3)
- BOLT, M12 X 1.75 X 30.0 LONG TORQUE TO 70-90 FT. LBS. (4)
- WASHER, 1/2" NOM (5)



SIDE VIEW
(D41E,P-6 WITH ENCLOSED CAB)

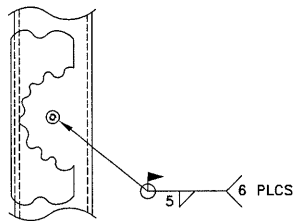


SECTION A-A

NOTES UNLESS OTHERWISE SPECIFIED

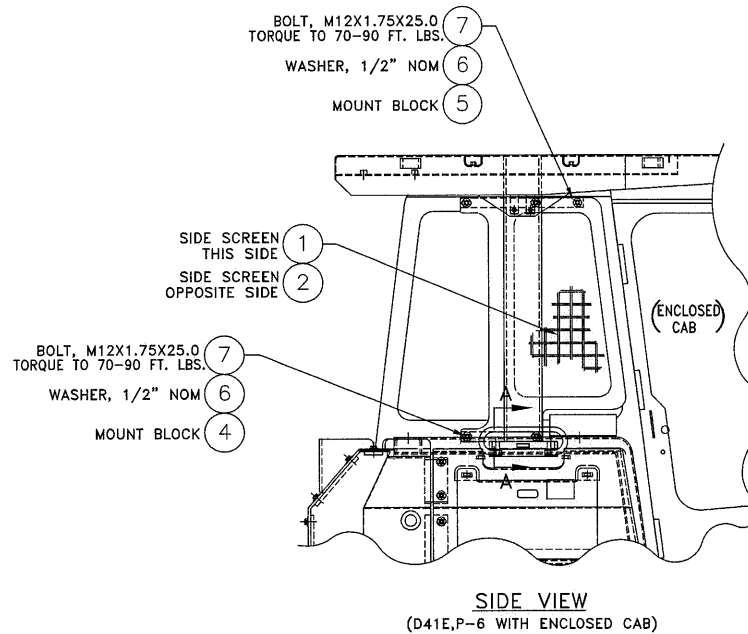
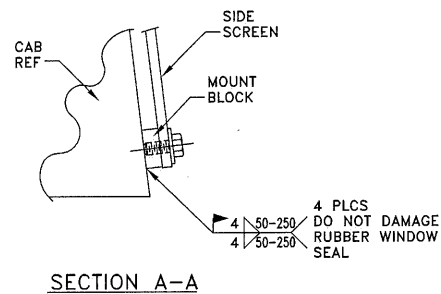
- 1) BOLT THE SIX BOSSES (ITEM 3) TO REAR SCREEN ASSEMBLY (ITEM 1) USING BOLTS AND WASHERS (ITEMS 4 & 5).
- 2) POSITION SCREEN IN APPROXIMATE LOCATION SHOWN. THE TWO NOTCHES SHOULD BE LOCATED OVER THE FUEL AND OIL FILL CAPS. THE SIX MOUNT PADS SHOULD LAY FLUSH ON THE OUTSIDE SURFACE OF THE ROPS LEGS. IF THE SCREEN IS SLIGHTLY WIDE, IT CAN BE CLAMPED TO THE ROPS LEGS WITH C-CLAMPS. IF THE SCREEN IS SLIGHTLY NARROW, IT CAN BE SPREAD APART (FOR EXAMPLE WITH A BOTTLE JACK AND 2"X4") OR ALTERNATIVELY, THE MOUNT PADS CAN BE GROUND THINNER.
- 3) WELD BOSSES TO ROPS LEGS AS SPECIFIED ON PRINT.
- 4) OPERATE ALL MACHINE CONTROLS TO EXTREME POSITIONS AND CHECK FOR ADEQUATE CLEARANCES FROM REAR SCREEN. CHECK THAT FUEL AND OIL FILL CAPS ARE ACCESSIBLE FOR REMOVAL AND REFILLING. TORQUE ALL BOLTS AS SPECIFIED.

REFERENCE PART NUMBER 4D242 FOR COMPLETE REAR SCREEN GROUP.
DIMENSIONS IN () ARE U.S. EQUIVALENT.



ITEM	QTY.	PART NO.	DESCRIPTION	PROGRAM NO.
* 7M7104 HARDWARE GROUP CONSISTS OF ITEMS 3-5				
5	6	25N8C	WASHER, 1/2" NOM	
4	6	34N1230C	BOLT, M12 X 1.75 X 30.0 LONG	
3	6	7M7384	BOSS M12X1.75 X 25.4# X 25.4 LONG	
* 2 1 7M7104 HARDWARE GROUP				
1	1	7M7114	REAR SCREEN WELDMENT	
DIMENSIONAL TOLERANCE UNLESS OTHERWISE SPECIFIED			R. WALCH PROJ. ENG.	MEDFORD FABRICATION
XX± XXX± ANGULAR±			PROGRAMMER	
DIMENSIONS ARE METRIC			T. ZOLL DRAFTER	PROTECTION PACKAGE KOMATSU D41E, P-6 REAR SCREEN GROUP (ENCLOSED CAB)
1=12 PLOT SCALE	NONE DRAWING SCALE	24 MAR 98 DATE	2Z106 PART NO.	F REV.

LETTER	CHANGE	BY	DATE	CKD.



NOTES UNLESS OTHERWISE SPECIFIED

- 1) BOLT THE MOUNTING BLOCKS (ITEMS 4 & 5) TO THE SIDE SCREEN ASSEMBLIES (ITEM 1 & 2) USING BOLTS AND WASHERS (ITEMS 6 & 7).
- 2) POSITION SCREEN IN APPROXIMATE LOCATION SHOWN. SCREEN SHOULD BE POSITIONED AS FAR FORWARD ON CAB AS POSSIBLE TO MAXIMIZE VISIBILITY. HOWEVER, SCREEN MUST NOT INTERFERE WITH OPEN DOOR, DOOR LATCH, OR DOOR SCREEN. IF A DOOR SCREEN IS TO BE USED, THE DOOR SCREEN SHOULD BE INSTALLED BEFORE THE SIDE SCREENS. AFTER INSTALLING DOOR SCREENS, LOCK DOORS IN THEIR OPEN POSITION AND MOVE THE SIDE SCREENS AS FAR FORWARD AS POSSIBLE.
- 3) TACK WELD MOUNT BLOCKS IN PLACE. REMOVE SCREENS AND COMPLETE WELDING MOUNT BLOCKS TO CAB. AVOID DAMAGING RUBBER WINDOW SEAL.
- 4) REATTACH SIDE SCREENS TO MOUNT BLOCKS AND TORQUE ALL BOLTS AS SPECIFIED. LOCK DOORS IN OPEN POSITION AND CHECK FOR ADEQUATE CLEARANCE.

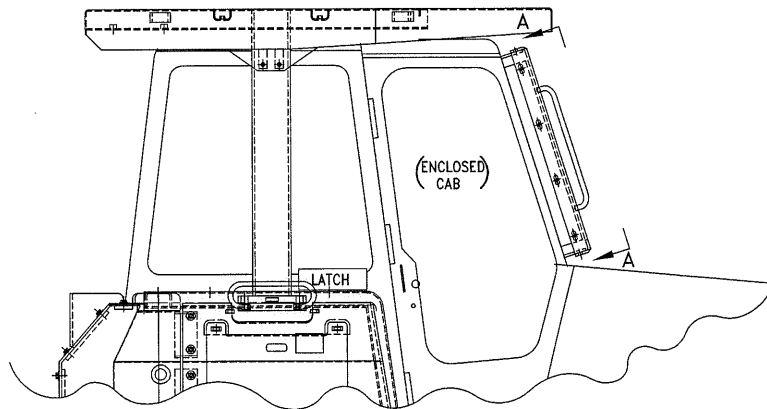
REFERENCE PART NUMBER 4D246 FOR COMPLETE SIDE SCREEN GROUP.

DIMENSIONS IN () ARE U.S. EQUIVALENT.

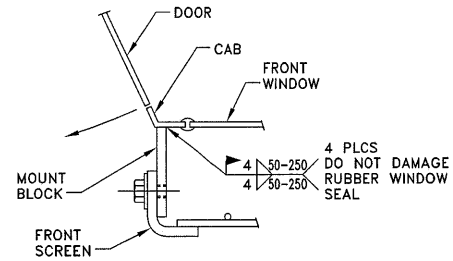
* 7M7163 HARDWARE GROUP CONSISTS OF ITEMS 4-7

ITEM	QTY.	PART NO.	DESCRIPTION	PROGRAM NO.
7	10	34N1225C	BOLT, M12X1.75X25.0	
6	10	25NBC	WASHER, 1/2" NOM	
5	2	7M7144	MOUNT BLOCK	
4	2	7M7143	MOUNT BLOCK	
3	1	7M7138	HARDWARE GROUP, SIDE SCREEN	
2	1	7M7134	SIDE SCREEN ASSY, LEFT SIDE	
1	1	7M7133	SIDE SCREEN ASSY, RIGHT SIDE	
DIMENSIONAL TOLERANCE UNLESS OTHERWISE SPECIFIED		R.WALCH PROJ. ENG.	MEDFORD FABRICATION	
.XX± ANGULAR±		R.BUCKINGHAM DRAFTER		
DIMENSIONS ARE METRIC		PROTECTION PACKAGE KOMATSU D41E,P-6 SIDE SCREEN GROUP (ENCLOSED CAB)		
1=12	NONE	28 JUN 00	22106	F
PLOT SCALE	DRAWING SCALE	DATE	PART NO.	SHT. 9 of 11 F. REV.

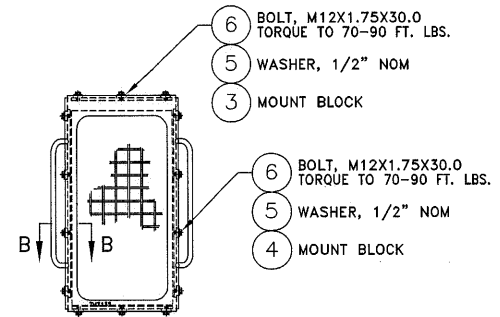
LETTER	CHANGE	BY	DATE	CKD.



SIDE VIEW
(D41E,P-6 WITH ENCLOSED CAB)



SECTION B-B



SECTION A-A
(VIEW ROTATED)

NOTES UNLESS OTHERWISE SPECIFIED

- 1) BOLT THE MOUNTING BLOCKS (ITEMS 3 & 4) TO THE FRONT SCREEN ASSEMBLY (ITEM 1) USING BOLTS AND WASHERS (ITEMS 5 & 6).
- 2) REMOVE EXISTING HANDLES ON FRONT OF CAB.
- 3) POSITION SCREEN IN APPROXIMATE LOCATION SHOWN. CHECK FOR INTERFERENCE WITH DOORS, WINDSHIELD WIPER AND OPEN ENGINE HOODS.
- 4) TACK WELD MOUNT BLOCKS IN PLACE. REMOVE SCREENS AND COMPLETE WELDING MOUNT BLOCKS TO CAB. AVOID DAMAGING RUBBER WINDOW SEAL.
- 5) REATTACH FRONT SCREENS TO MOUNT BLOCKS AND TORQUE ALL BOLTS AS SPECIFIED.

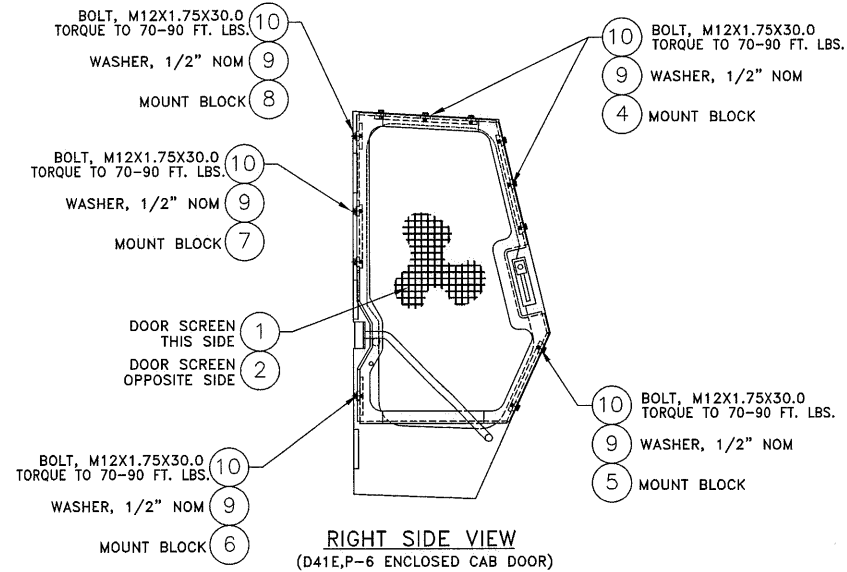
REFERENCE PART NUMBER 4D247 FOR COMPLETE FRONT SCREEN GROUP.

DIMENSIONS IN () ARE U.S. EQUIVALENT.

* 7M7139 HARDWARE GROUP CONSISTS OF ITEMS 4-6

6	14	34N1230C	BOLT, M12X1.75X30.0	
5	14	25N8C	WASHER, 1/2" NOM	
4	2	7M7162	MOUNT BLOCK	
3	2	7M7145	MOUNT BLOCK	
2	1	7M7139	HARDWARE GROUP, SIDE SCREEN	
1	1	7M7135	FRONT SCREEN ASSY	
ITEM	QTY.	PART NO.	DESCRIPTION	PROGRAM NO.
DIMENSIONAL TOLERANCE UNLESS OTHERWISE SPECIFIED			R.WALCH PROJ. ENG.	MEDFORD FABRICATION PROTECTION PACKAGE KOMATSU D41E,P-6 FRONT SCREEN GROUP (ENCLOSED CAB)
.XX±			PROGRAMMER	
ANGULAR±			R.BUCKINGHAM DRAFTER	
DIMENSIONS ARE METRIC				
1=12	NONE	28 JUN 00	2Z106	F
PLOT SCALE	DRAWING SCALE	DATE	PART NO.	SHT.10 of 11 REV.

LETTER	CHANGE	BY	DATE	CKD.



NOTES UNLESS OTHERWISE SPECIFIED

- 1) BOLT THE MOUNTING BLOCKS (ITEMS 4 & 8) TO THE SIDE SCREEN ASSEMBLIES (ITEM 1 & 2) USING BOLTS AND WASHERS (ITEMS 9 & 10).
- 2) POSITION SCREEN IN APPROXIMATE LOCATION SHOWN. CHECK FOR INTERFERENCE WITH FRONT SCREEN, SIDE SCREENS, LATCH, TANGUARDS AND ROPS LID. MAKE SURE DOOR OPENS AND CLOSES FREELY WITHOUT INTERFERENCE.
- 3) TACK WELD MOUNT BLOCKS IN PLACE. REMOVE SCREENS AND COMPLETE WELDING MOUNT BLOCKS TO CAB. AVIOD DAMAGING RUBBER WINDOW SEAL.
- 4) REATTACH DOOR SCREENS TO MOUNT BLOCKS AND TORQUE ALL BOLTS AS SPECIFIED.

REFERENCE PART NUMBER 4D248 FOR COMPLETE DOOR SCREEN GROUP.

DIMENSIONS IN () ARE U.S. EQUIVALENT.

* 7M7140 HARDWARE GROUP CONSISTS OF ITEMS 4-10

10	24	34N1230C	BOLT, M12X1.75X30.0	
9	24	25N8C	WASHER, 1/2" NOM	
8	2	7M7161	MOUNT BLOCK	
7	2	7M7160	MOUNT BLOCK	
6	2	7M7159	MOUNT BLOCK	
5	2	7M7158	MOUNT BLOCK	
4	4	7M7157	MOUNT BLOCK	
3	1	7M7140	HARDWARE GROUP, DOOR SCREEN	
2	1	7M7137	DOOR SCREEN ASSY, LEFT SIDE	
1	1	7M7136	DOOR SCREEN ASSY, RIGHT SIDE	
ITEM	QTY.	PART NO.	DESCRIPTION	PROGRAM NO.
DIMENSIONAL TOLERANCE UNLESS OTHERWISE SPECIFIED			R.WALCH PROG. ENG.	MEDFORD FABRICATION
.X± .XX± ANGULAR±			PROGRAMMER	
DIMENSIONS ARE METRIC			R.BUCKINGHAM DRAFTER	PROTECTION PACKAGE KOMATSU D41E,P-6 DOOR SCREEN GROUP (ENCLOSED CAB)
1=12 PLOT SCALE	NONE DRAWING SCALE	28 JUN 00 DATE	22106 PART NO.	SHT.11 of 11 F REV.